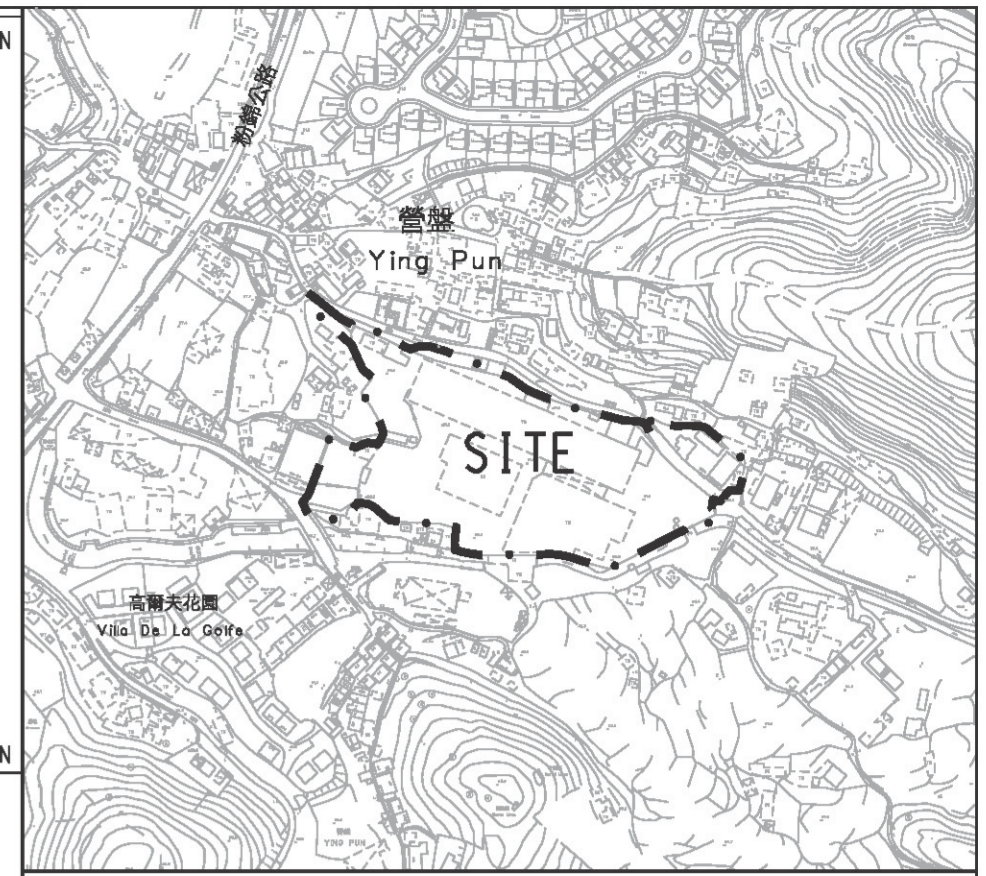
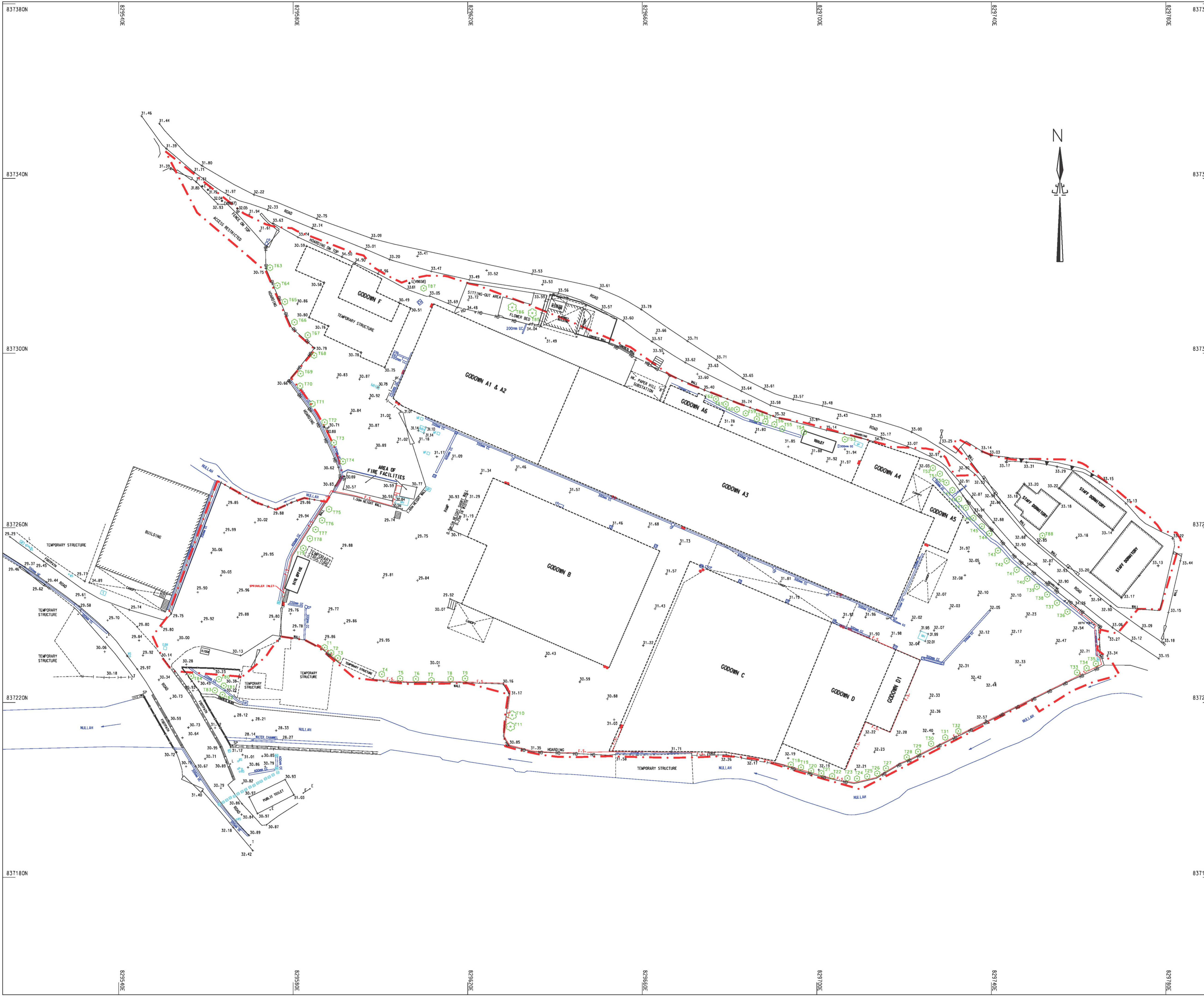


Appendix I
Topographic and Tree Survey Plan



LOCATION PLAN 1:4,000

NOTES :

- MEASUREMENTS ARE BASED ON HONG KONG 1980 METRIC GRID & HONG KONG PRINCIPAL DATUM.
- ALL UNITS ARE IN METRES OR OTHERWISE STATED.
- ALL LEVELS OF KERB WERE MEASURED FROM TOE OF KERB

LEGEND:

- 200mm CC 200mm COVERED U-CHANNEL
- 200mm UC 200mm U-CHANNEL
- FENCE/RAILING
- + LEVEL POINT
- L LAMP POST
- SP SIGN POLE
- TP TELEPHONE POLE
- E ELECTRICITY POLE
- T MANHOLE TELEPHONE
- MS MANHOLE STORM WATER
- MF MANHOLE FOUL WATER
- MH MANHOLE
- E&M MANHOLE E&M
- PL MANHOLE POWER LINE
- WS VALVE WATERWORKS
- G GULLY/GRATING
- HO HOARDING
- S.W. STANDING WALL
- S.S.E. STAIR/STEP EDGE
- G GATE
- T.S. TEMPORARY STRUCTURE
- C CANOPY
- CP CATCH PIT
- CUL CULVERT
- FB FLOWER BED
- B.L. BUILDING LINE
- T1 TREE & TREE NO.
- E FIRE EXTINGUISHER
- R FIRE HOSE REEL
- F.S. FIRE SERVICES PIPE
- B.L.P. BOUNDARY LINE FOR PLANNING APPLICATION


PROJECT :

Topographical and Tree Location Survey for Various Lots in D.D.100 and the Adjoining Government Land in Ying Pun, Kwu Tung South

DATE OF SURVEY May 2026	SCALE AT A1 1:400
----------------------------	----------------------

DRAWING NUMBER KEL/TOPO/26/03	REVISION 0
----------------------------------	---------------

Plan Approved By:

Signature 
 Sr. Dr. Prof. Ching Siu-tong
 Authorized Land Surveyor
 FHKIS, FRICS, MISAust., R.P.S.(LS), MCIArb, MSS (Aust.)

Dated this: 22nd day of May 2026



建地測量規劃及地理訊息系統有限公司

KELand Surveying, Planning & GIS Co. Ltd.

Flat B, 20/F, Chatham Commercial building, 399 Chatham Road North, Kowloon

Telephone : 27655737 Fax : 27655722

E-mail : keland@biznetvigator.com or info@keland.com.hk Web Page : www.keland.com.hk

**Topographical and Tree Location Survey for
various lots in D.D.100 and the adjoining government land in Ying Pun, Kwu Tung South**

Date of Survey : 11 May 2026

File Name: KEL/TOPO/26/03

The following table should be read in conjunction with the Plan Nos. KEL/TOPO/26/03

S/N	Tree Number	DBH	Height	Tree Crown Spread	Position of Trees			Remarks	
					No.	(mm)	(m)		(m)
1	T1	110	2	1		837232.6	829587.2	30.21	
2	T2	50	3	2		837231.4	829588.7	30.31	<i>New planted</i>
3	T3	60	2	1		837230.2	829590.2	30.21	<i>New planted</i>
4	T4	50	2	1		837226.5	829600.3	29.74	<i>New planted</i>
5	T5	50	2	1		837225.5	829604.5	29.89	<i>New planted</i>
6	T6	90	3	1		837225.4	829608.1	30.00	
7	T7	50	3	1		837225.1	829611.7	29.80	<i>New planted</i>
8	T8	50	3	1		837225.4	829616.1	29.99	<i>New planted</i>
9	T9	50	2	1		837225.5	829619.4	29.84	<i>New planted</i>
10	T10	200	6	3		837217.1	829630.2	31.02	
11	T11	220	3	2		837214.5	829629.8	31.13	
12	T12	--	--	--		<i>The tree was fallen</i>			
13	T13	--	--	--		<i>The tree was fallen</i>			
14	T14	--	--	--		<i>The tree was fallen</i>			
15	T15	--	--	--		<i>The tree was fallen</i>			
16	T16	--	--	--		<i>The tree was fallen</i>			
17	T17	--	--	--		<i>The tree was fallen</i>			
18	T18	100	3	1		837205.8	829694.0	32.07	
19	T19	120	3	1		837205.2	829696.4	32.02	
20	T20	60	3	1		837204.3	829698.7	32.05	<i>New planted</i>
21	T21	50	3	1		837203.8	829701.0	32.10	<i>New planted</i>
22	T22	50	2	1		837203.1	829703.5	32.11	<i>New planted</i>
23	T23	100	3	1		837202.7	829707.0	32.16	
24	T24	90	3	1		837202.6	829709.2	32.18	
25	T25	120	2	1		837203.1	829711.6	32.18	
26	T26	60	2	1		837203.7	829713.9	32.33	<i>New planted</i>
27	T27	70	2	1		837204.9	829715.8	32.31	
28	T28	90	2	1		837207.5	829720.6	32.32	
29	T29	80	2	1		837208.7	829723.2	32.33	
30	T30	40	2	1		837210.5	829726.2	32.35	<i>New planted</i>
31	T31	50	2	1		837212.0	829729.4	31.66	<i>New planted</i>
32	T32	50	2	1		837213.5	829732.4	31.80	<i>New planted</i>
33	T33	90	2	1		837226.9	829759.7	32.67	
34	T34	80	2	1		837227.9	829761.8	32.69	
35	T35	90	2	1		837228.9	829763.9	33.01	
36	T36	80	2	1		837240.8	829757.5	32.48	
37	T37	70	2	1		837242.8	829755.1	32.53	



建地測量規劃及地理訊息系統有限公司

KELand Surveying, Planning & GIS Co. Ltd.

Flat B, 20/F, Chatham Commercial building, 399 Chatham Road North, Kowloon

Telephone : 27655737 Fax : 27655722

E-mail : keland@biznetvigator.com or info@keland.com.hk Web Page : www.keland.com.hk

**Topographical and Tree Location Survey for
various lots in D.D.100 and the adjoining government land in Ying Pun, Kwu Tung South**

Date of Survey : 11 May 2026

File Name: KEL/TOPO/26/03

The following table should be read in conjunction with the Plan Nos. KEL/TOPO/26/03

S/N	Tree Number	DBH	Height	Tree Crown Spread	Position of Trees			Remarks
					No.	(mm)	(m)	
38	T38	65	2	1	837244.8	829752.8	32.29	
39	T39	80	2	1	837246.5	829750.4	32.31	
40	T40	140	3	1	837248.4	829748.3	32.16	
41	T41	60	2	1	837250.4	829745.8	32.21	<i>New planted</i>
42	T42	90	3	1	837252.5	829743.5	32.19	
43	T43	60	2	1	837254.8	829741.5	32.14	<i>New planted</i>
44	T44	95	2	1	837258.7	829739.5	32.14	
45	T45	110	3	2	837260.3	829737.8	32.21	
46	T46	95	3	1	837262.2	829735.9	32.26	
47	T47	65	2	1	837264.6	829734.1	32.39	
48	T48	90	2	1	837266.6	829732.6	32.35	
49	T49	90	2	1	837268.6	829731.1	32.35	
50	T50	80	2	1	837270.3	829729.7	32.34	
51	T51	90	2	1	837272.4	829728.2	32.37	
52	T52	100	3	1	837273.7	829726.6	32.30	
53	T53	100	3	2	837280.3	829706.4	32.39	
54	T54	100	3	2	837281.9	829697.0	32.19	
55	T55	75	2	1	837282.7	829692.1	31.96	<i>New planted</i>
56	T56	100	3	1	837283.7	829690.3	31.82	<i>New planted</i>
57	T57	45	2	1	837284.4	829688.2	31.84	<i>New planted</i>
58	T58	80	3	2	837284.9	829686.2	31.97	
59	T59	75	2	1	837286.2	829683.7	32.22	
60	T60	90	3	2	837287.1	829681.7	32.19	
61	T61	95	3	1	837288.3	829679.1	31.95	
62	T62	85	3	2	837289.5	829676.9	31.85	
63	T63	90	2	2	837319.6	829574.7	30.91	<i>New planted</i>
64	T64	90	2	2	837315.5	829576.4	30.86	<i>New planted</i>
65	T65	110	2	2	837311.8	829578.1	30.85	
66	T66	80	3	2	837307.1	829580.3	30.88	<i>New planted</i>
67	T67	110	2	2	837304.1	829583.3	30.82	
68	T68	70	2	2	837299.5	829584.8	30.77	<i>New planted</i>
69	T69	75	2	2	837295.3	829581.7	30.72	<i>New planted</i>
70	T70	45	2	2	837292.5	829581.6	30.67	<i>New planted</i>
71	T71	100	3	2	837288.4	829584.4	30.71	
72	T72	80	3	3	837284.2	829587.2	30.70	<i>New planted</i>
73	T73	80	2	1	837279.5	829589.3	30.73	<i>New planted</i>
74	T74	45	2	2	837275.2	829591.4	30.54	<i>New planted</i>



建地測量規劃及地理訊息系統有限公司

KELand Surveying, Planning & GIS Co. Ltd.

Flat B, 20/F, Chatham Commercial building, 399 Chatham Road North, Kowloon

Telephone : 27655737 Fax : 27655722

E-mail : keland@biznetvigator.com or info@keland.com.hk Web Page : www.keland.com.hk

**Topographical and Tree Location Survey for
various lots in D.D.100 and the adjoining government land in Ying Pun, Kwu Tung South**

Date of Survey : 11 May 2026

File Name: KEL/TOPO/26/03

The following table should be read in conjunction with the Plan Nos. KEL/TOPO/26/03

S/N	Tree Number	DBH	Height	Tree Crown Spread	Position of Trees			Remarks
					No.	No.	No.	
No.	No.	(mm)	(m)	(m)	Northing (m)	Easting (m)	Level of base of trunk (mPD)	
75	T75	110	3	2	837264.3	829588.2	29.89	
76	T76	90	3	1	837261.7	829586.6	29.92	
77	T77	80	3	1	837259.6	829585.1	29.95	
78	T78	50	2	1	837257.5	829583.8	29.91	<i>New planted</i>
79	T79	150	3	1	837255.4	829582.3	29.93	
80	T80	145	6	7	837225.3	829563.0	31.20	<i>Outside the application boundary</i>
81	T81	160	6	7	837223.9	829564.1	31.19	<i>Outside the application boundary</i>
82	T82	230	6	8	837221.8	829563.8	31.19	<i>Outside the application boundary</i>
83	T83	220	7	8	837222.8	829562.1	31.20	<i>Outside the application boundary</i>
84	T84	130	4	5	837226.1	829556.6	31.23	<i>Outside the application boundary</i>
85	T85	180	7	3	837309.2	829634.8	32.96	
86	T86	220	7	6	837310.5	829630.2	33.27	
87	T87	230	5	5	837314.9	829609.9	33.73	
88	T88	240	3	3	837258.2	829751.7	36.26	
89	T89	--	--	--	<i>The tree was fallen</i>			